

33kV RE SUBSTATION (E-HOUSE)

For Large Scale Solar Project

Sole Distributor:



RANKON POWER ENGINEERING & SERVICES SDN BHD (949843-T)
No.10B, Jalan PJS 10/32, Bandar Sri Subang,
46000 Petaling Jaya,
Selangor Darul Ehsan, Malaysia.

Tel : +603 5612 7111

Fax : +603 5637 5488

Email : pierre.nyon@rpes.com.my / victor.tay@rpes.com.my

Enhance
Edition

2019

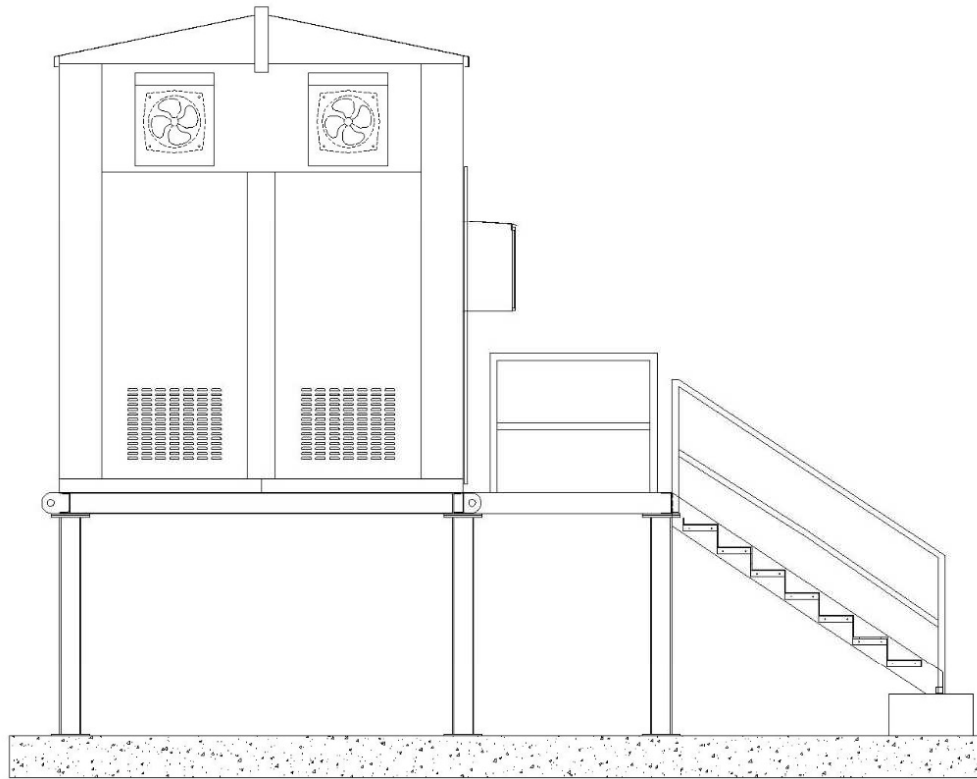
- Fully assembled in Malaysia
- Built in accordance with Malaysian / IEC Standards
- Able to custom-made to suit any requirement / conditions.
- Compatible with any type of Switchgear.

EH-33-3TGVN-R

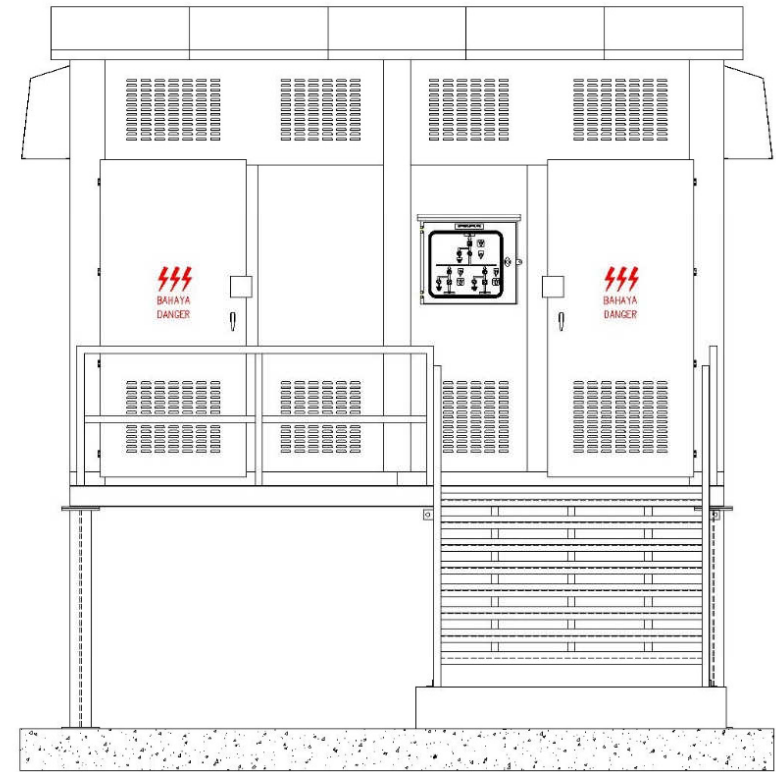
IP41 Outdoor 33kV RE Substation (E-House) consists of 33kV Switchgear and Battery Charger.

| | |
|---------------|--|
| Material Used | : Hot Rolled Steel Sheet 2.5mm Body & 3.0mm Structure 2.0mm Roofing |
| Finishing | : Powder Coating |
| Flooring | : 3.0mm Aluminium Chequered Plate |
| Base Frame | : Mild Steel C-Channel with lifting lugs |
| Finishing | : Painted black with antirust coating layer |
| Dimension | : Approx. 4500mm x 3500mm x 5000mm (L x W x H) |
| Weight | : Approx. 10 tons |
| Accessories | : 32A 1Ø distribution board 110Vdc, 240Vac, 1Ø nickel cadmium battery unit Florescent lights & 13A switch socket outlets Exhaust fans with timer control Rubber mat |
| Optional | : Fibre optic patch panel for data control system Outdoor remote-control panel with mimic diagram Raise up I-beam (1.5m) with platform c/w ladder & safety handrail (Upon request) |





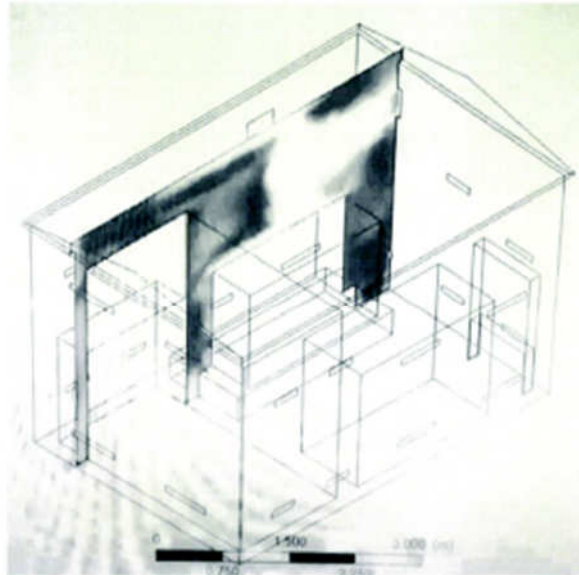
LEFT HAND VIEW



EXTERNAL FRONT VIEW

GENERAL OUTLINE DRAWING

33KV RE SUBSTATION (E-HOUSE)



Thermal Analysis

33KV 1600KVA TRANSFORMER STATION

T01-T10, T12-20, T22

Ir. Lum YL | 31.08.18 | Client : M ELECTRICAL & ENGINEERING SDN. BHD.



- Details Certificate upon request

33kV SF6 Gas Insulated Switchgear

Solar Incomer Panel

Technical Specification

| | |
|-------------------------------------|---|
| Type | : GV3N |
| Voltage | : 36kV |
| Normal Current | : 630A |
| Frequency | : 50Hz |
| Lightning Impulse withstand voltage | : 170kV |
| Power Frequency withstand voltage | : 70kV |
| Short-circuit making current | : 79kA |
| Short-circuit breaking current | : 25kA |
| Short-circuit duration | : 3 sec |
| Operating voltage | : 110Vdc |
| Protection device | : Overcurrent Earth Fault Relay |
| Control System | : SF6 Gas tank pressure gauge with contacts |

Made : Malaysia

Warranty : 24 Months from commissioning date or
30 months from date of delivery from
manufacturer

33kV SF6 Gas Insulated Switchgear

Outgoing Feeder to TNB Panel

Technical Specification

| | |
|-------------------------------------|---|
| Type | : GV3N |
| Voltage | : 36kV |
| Normal Current | : 630A |
| Frequency | : 50Hz |
| Lightning Impulse withstand voltage | : 170kV |
| Power Frequency withstand voltage | : 70kV |
| Short-circuit making current | : 79kA |
| Short-circuit breaking current | : 25kA |
| Short-circuit duration | : 3 sec |
| Operating voltage | : 110Vdc |
| Protection device | : Overcurrent Earth Fault Relay |
| Control System | : SF6 Gas tank pressure gauge with contacts |

OVERALL SINGLE LINE DIAGRAM

